

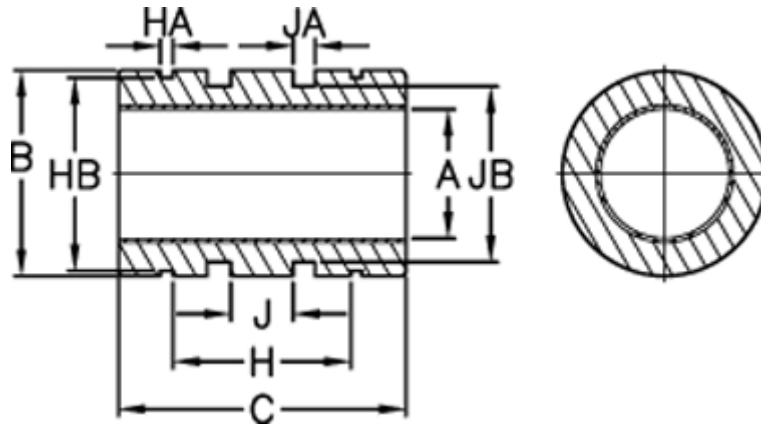
Data Sheet



Article number: 50100303

Description: Standard bearing FMC 30 E

Measures



A max	= 30.1290000000000001	For o-ring	= 42,52 x 2,62	Static load (kg)	
A min	= 30.096	H	= 48	Surface area kcm	
B max	= 47	HA	= 1.9		
B min	= 46.9750000000000001	HB	= 44.5		
Bush weight kg	= 0.176	J	= 15		
C max	= 68	JA	= 3.17		
C min	= 67.7459999999999995	JB	= 42.7		
Concentric mm	= 0.0254	Ret ring part no (DIN 471)	= 47		